

Troponins Booklet

Introduction

Troponin (Tn), or the troponin complex plays an important role in the regulation of skeletal and cardiac muscle contraction. It consists of three subunits: troponin T (TnT), troponin I (TnI) and troponin C (TnC). These subunits are held together by non-covalent interactions. TnT is the tropomyosin-binding subunit that regulates interaction between the troponin complex and the thin filament. The TnI subunit is responsible for inhibiting actomyosin formation at low intracellular Ca²⁺ concentrations. The TnC subunit binds Ca²⁺ ions during the excitation of the muscle and changes the conformation of the troponin complex, thus enabling the formation of actomyosin complex and subsequent muscle contraction (1).

In human beings, TnI and TnT are each presented by three isoforms. Two skeletal isoforms of both TnI and TnT (skTnI and skTnT) are expressed in slow-twitch and fast-twitch skeletal muscle, respectively. The third isoform of both TnI and TnT (cTnI and cTnT) is typical for the cardiac tissue. While cTnI is presented exclusively in the heart (2), cTnT is probably less specific and can be transiently expressed in some forms of diseased skeletal muscles (3).

In the late 1980s, cTnI (4), and later cTnT (5), were proposed as markers of cardiac cell death. Both proteins are now well established as the guideline-recommended markers for assisting in the diagnosis of acute myocardial infarction (AMI) (6-8). They are also used as markers of myocardial injury in clinical pathologies, such as postsurgery myocardium trauma, chemotherapy cardiotoxicity and many other diseases related to cardiac muscle injury (9)

Abbreviations

AMI	Acute myocardial infarction
a.a.r.	amino acid residue(s)
cc	cell culture; produced in vitro (in the Catalogue or MAb name)
CLIA	chemiluminescent immunoassay
cTnI	cardiac troponin I
cTnT	cardiac troponin T
CPS	counts per second
ELISA	enzyme-linked immunosorbent assay
DELFLIA®	dissociation-enhanced lanthanide fluorescence immunoassay
HAMA	human anti-mouse antibody
hs-cTn	high-sensitivity cardiac troponin
IFCC	International Federation of Clinical Chemistry and Laboratory Medicine
LF	lateral flow
LoD	limit of Detection
LoB	limit of blank
MAb	monoclonal antibody
NIST	National Institute of Standards and Technology
Rec	recombinant
skTnI	skeletal troponin I
skTnT	skeletal troponin T
SRM	standard reference material
Tn	Troponin
TnC	Troponin C

Introduction	2	Antibodies for the detection of cTnI from different animal species	16
Antibodies that are specific to different epitopes of cTnI	4	Cardiac troponin I and troponin complex....	18
High-sensitivity cTn assay concept	8	Cardiac troponin T (cTnT)	21
Factors that influence cTnI measurements	10	Troponin C (TnC).....	24
cTnI assay development and pair recommendations.....	12	References.....	25
Heterogeneity of cTnI forms in human blood and assay standardization	15	Selected troponin articles from Hytest scientists	27
		Ordering information	31



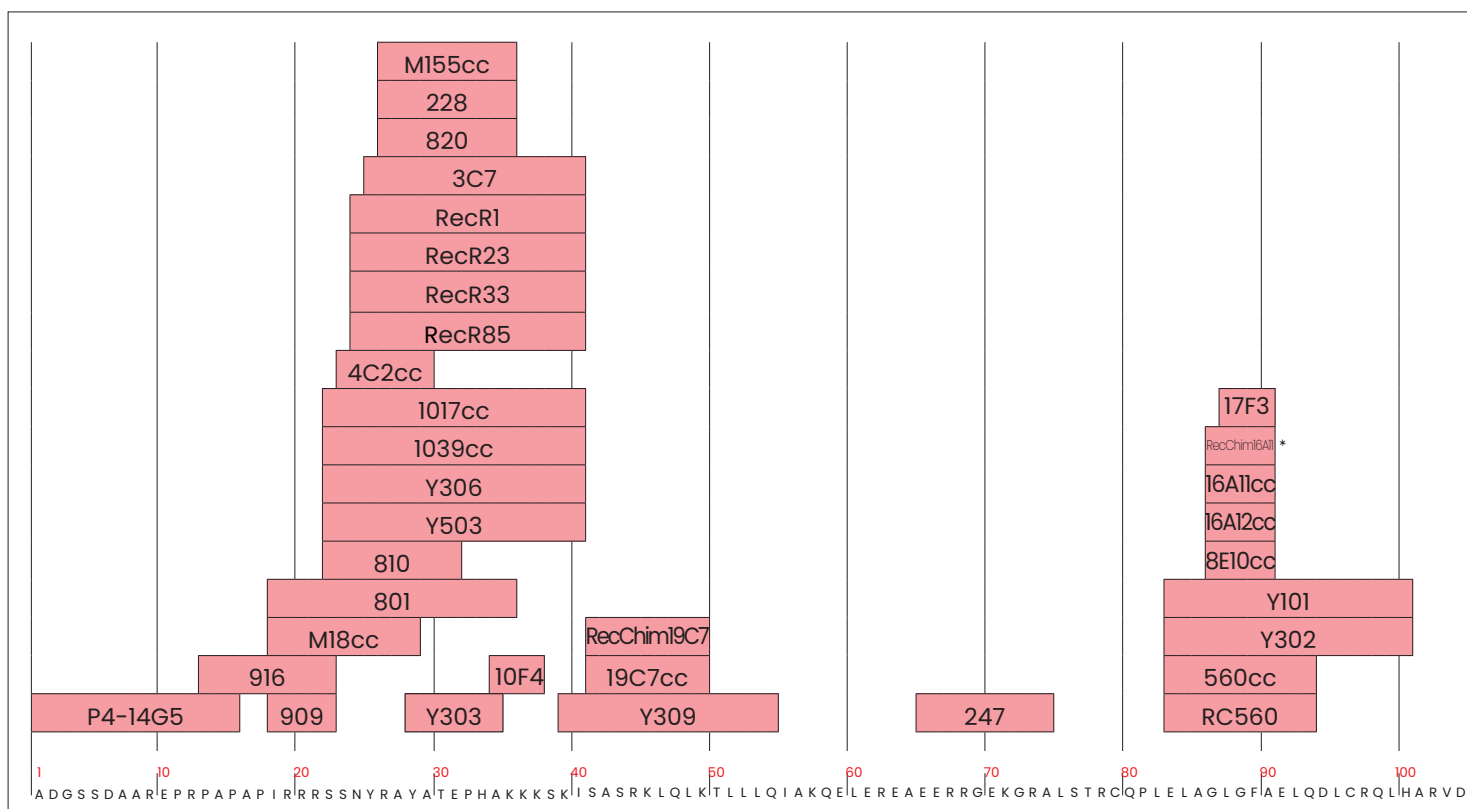
Antibodies that are specific to different epitopes of cTnI

At Hytest, we have been working with cTnI antibodies for almost 30 years and during this time we have generated and analyzed thousands of cTnI-specific antibodies. The best of these are manufactured for sale. Our antibody selection includes antibodies that are specific to different epitopes of the cTnI molecule (see Figure 1).

Hytest antibodies are widely used in commercial cTnI assays that are based on different types of platforms, e.g. ELISAs, turbidimetry, lateral flow and magnetic particles. The antibodies are also used in research applications such as Western blotting, immunohistochemistry, and many others.

Antibodies that are available in different formats

Our antibodies are available as both *in vivo* and *in vitro* produced products. Further-more, we are also offering antibodies as recombinant proteins derived from several animal species as well as chimeric recombinant proteins. These chimeric antibodies consist of the original mouse derived variable regions and human derived constant regions. The chimeric MABs help to avoid false negative and false positive results that are caused by human anti-mouse antibodies (HAMA) in immunoassays (see Chapter: Heterophile antibodies and the HAMA effect).

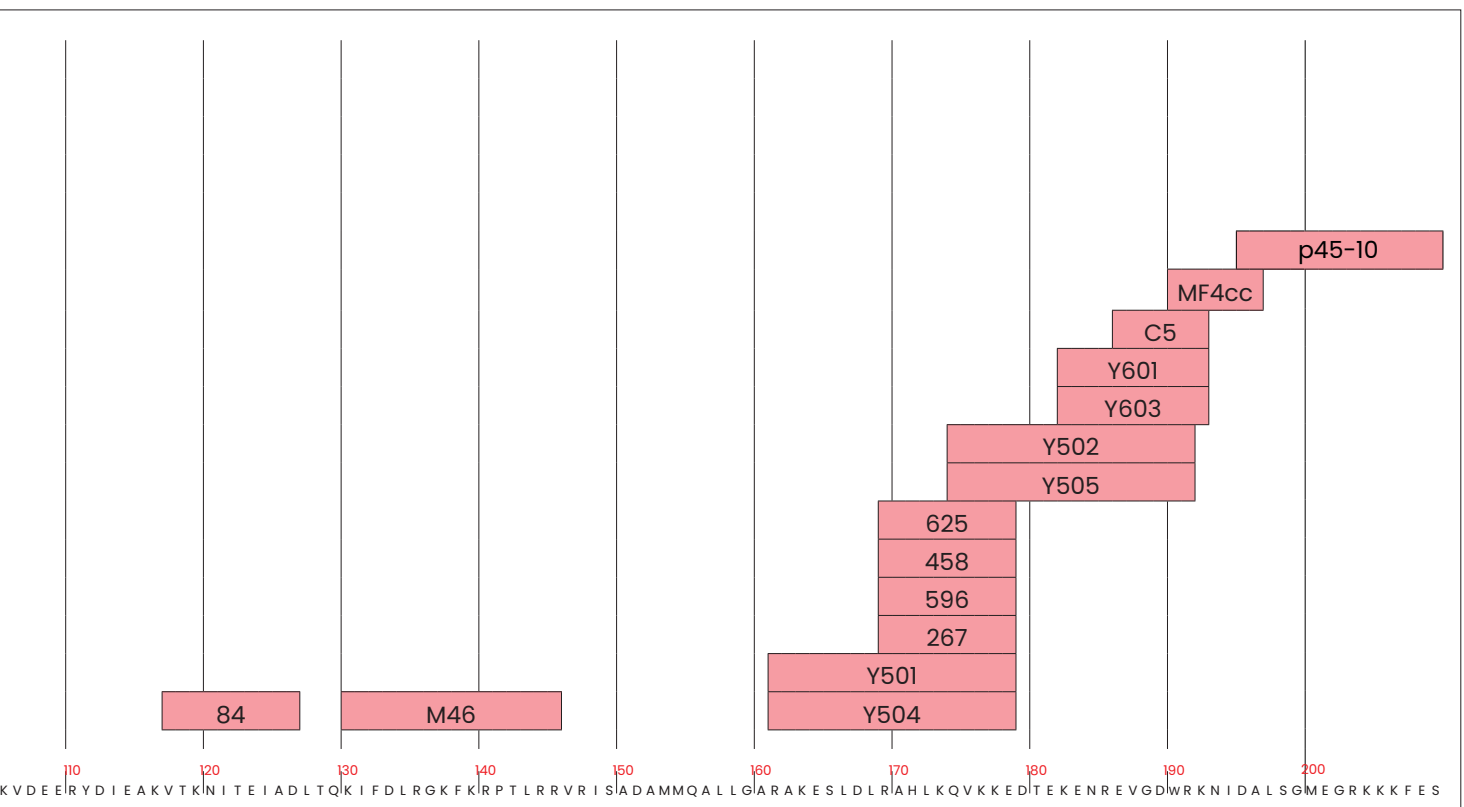


* RecChim16A11

MAb	Epitope (a.a.r.)	MAb	Epitope (a.a.r.)
P4-14G5	1 – 15	247	65 – 74
916	13 – 22	RC560, 560cc	83 – 93
909	18 – 22	Y101, Y302	83 – 100
M18cc	18 – 28	RecChim16A11, 16A11cc, 16A12cc, 8E10cc	86 – 90
801	18 – 35	17F3	87 – 90
810	22 – 31	84	117 – 126
1017cc, 1039cc, Y306, Y503	22 – 40	M46	130 – 145
4C2cc	23 – 29	Y501, Y504	161 – 178
RecR1, RecR23, RecR33, RecR85	24 – 40	625, 458, 596, 267	169 – 178
3C7	25 – 40	Y502, Y505	174 – 191
M155cc, 228, 820	26 – 35	Y601, Y603	182 – 192
Y303	28 – 34	C5	186 – 192
10F4	34 – 37	MF4cc	190 – 196
Y309	39 – 54	p45-10	195 – 209
RecChim19C7, 19C7cc	41 – 49		

Figure 1 and Table 1.

Epitope mapping of Hytest anti-cTnI antibodies and summary table. We offer several specially selected MAbs that are specific to various epitopes along the cTnI molecule. The epitope specificity of all of the MAbs has been determined either by the SPOT technique or by other methods that utilize different peptide libraries.



High-sensitivity cTn assay concept

In the late 1990s, the contemporary cTnI (and cTnT) assays were able to detect cTn from the blood of patients at ng/mL ($\mu\text{g/L}$) levels. In practice, these assays allowed for the reliable detection of cTn just three to six hours following the onset of ischemic symptoms such as chest pain. This meant that cTns were considered to be moderately sensitive but relatively late markers of AMI. In contrast, recent high-sensitivity cTn (hs-cTn) assays, the detection limit of which is pg/mL (ng/L) rather than ng/mL, have made it possible to identify any myocardial injury, including those of AMI patients, within one to three hours; this represents a potential three-hour time saving to ensure more rapid patient management. The hs-cTn assays have made cTn early markers of AMI.

The current generation of commercially available hs-cTn assays are approximately 5000 to 10000 times more analytically sensitive (1-2 ng/L vs. 10 ng/mL) than the first cTnI assay described by Cummins in 1987 (4). hs-cTn assays are able to detect minor cardiac injury events from a long list of pathologies that cause myocardial tissue necrosis or cell death (8).

The hs-cTn assay concept, its analytical characteristics and what should be known when implementing these assays in clinical practice are all well described in published articles and reviews (10-15).

Hytest offers new cTnI pair recommendations targeted for cTnI assay development. The pairs can be found under Cat.# RC4T21, Cat.# 4T21cc, Cat.# 4TC2 or Cat.# RC4TC2, and Cat.# 4T27cc (Table 2).

Table 2.
New Pair recommendations for cTnI assay development.

Capture	Detection	Platform
Y302 + 20C6cc	RecR85 + 7B9cc	LF
RecR85 + 560cc	Y505 + RecChim20C6	CLIA
RecR33 + 560cc	Y505 + RecChim20C6	
RecR85 + 560cc	7B9cc + RecChim20C6	
19C7cc	RecChim16A11	DELFI [®]
RecChim19C7	RecChim16A11	
4C2cc	RecChim19C7	
4C2cc	RecChim16A11	
625	RecChim19C7	

LF: Lateral Flow, CLIA: Chemiluminescent immunoassay, DELFIA[®]: Dissociation-enhanced lanthanide fluorescence immunoassay

HIGH SENSITIVITY CARDIAC TROPONIN ASSAYS

The hs-cTn assay is an assay that meets the following two criteria (16):

1. 99th percentile upper reference limit (URL) measured with an analytical imprecision (% CV; coefficient of variation) of $\leq 10\%$
and
2. Measures concentrations at \geq the limit of detection (LoD) in $\geq 50\%$ of healthy (normal) subjects

Our new pair recommendations have high sensitivity, and they correlate well with commercially available cTnI assay (Figure 2) with no cross-reactivity to other cardiac or skeletal isoforms of troponin. To better illustrate the performance of our products, we have developed prototype assays on both CLIA (Figure 2 A) and LF platforms (Figure 2 B). The limit of blank (LoB) and limit of detection (LoD) for both prototype assays are listed below in Table 3.

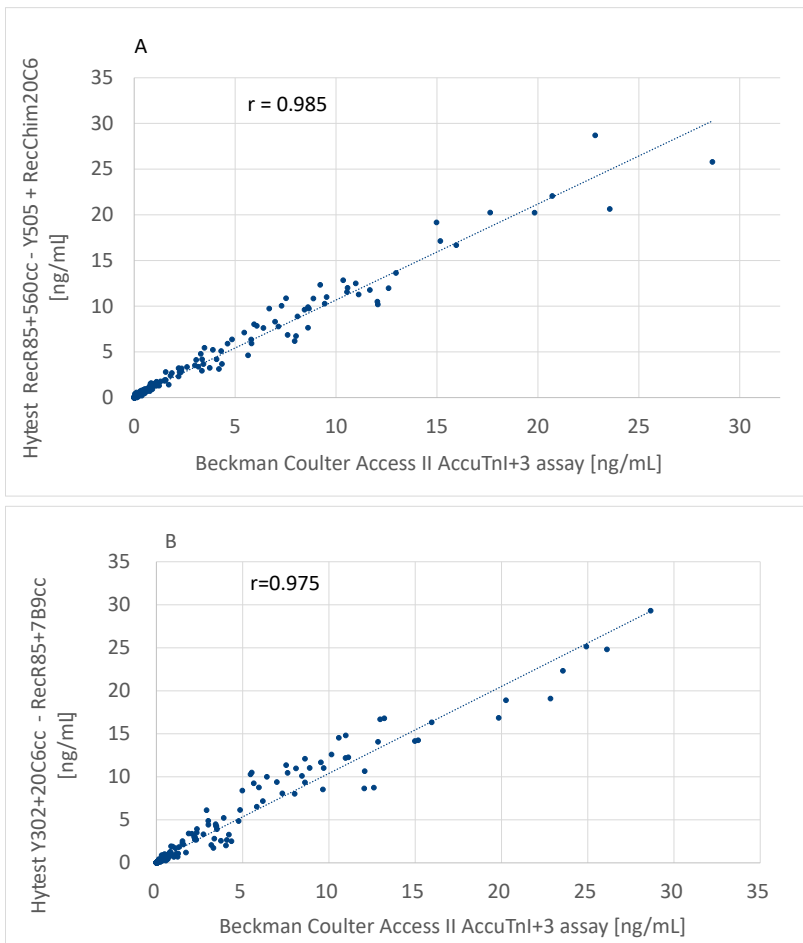


Figure 2. A. Correlation of Hytest cardiac troponin I in-house CLIA assay and commercially available cTnI assay (n=236); B. Correlation of Hytest cardiac troponin I in-house LF assay and commercially available cTnI assay (n=236).

Table 3.
Parameters of in-house prototype assays

	CLIA	LF
Capture	RecR85+560cc	Y302 + 20C6cc
Detection	Y505+RecChim20C6	RecR85 + 7B9cc
LoB	1.29 pg/mL	5.42 pg/mL
LoD	3.60 pg/mL	5.46 pg/mL

Factors that influence cTnI measurements

cTnI is a very challenging analyte that features a complicated “biochemical character”. We have spent years studying cTnI in order to learn its biochemical characteristics and posttranslational processing. Our knowledge has provided us with a better understanding of what antibody requirements are necessary to develop a sensitive, quantitative immunoassay enabling precise measurement in blood.

While cTnI is considered to be the gold standard for the diagnosis of cardiac muscle cell injury, there is currently no standardization between the many different diagnostic assays designed for the quantitative measurements of cTnI in human blood. Therefore, a blood sample often gives varying cTnI concentrations when it is analyzed with different commercial cTnI assays.

The most common reason for the discrepancy between the different assay measurements is the difference in the epitope specificities of the antibodies that are used in the different assays. Several of the multiple factors that have an influence on the measurements include Proteolytic degradation, complexing of cTnI with other proteins, heparin in the sample tube, as well as cTnI-specific autoantibodies and heterophile antibodies that might be present in the blood of a patient. Different monoclonal and polyclonal antibodies that are utilized in assays are sensitive to these factors in different degrees.

Cardiospecificity

Three different isoforms of TnI can be found in human beings. cTnI isoform is cardio-specific and two different skTnI isoforms are expressed in skeletal muscle. The three proteins are highly homologous: The sequence identity between cTnI and slow

skTnI is approximately 50% and the sequence identity between cTnI and fast skTnI is 46%. Figure 3 shows the sequence similarity between cTnI and skTnI proteins. Apart from the extension in the N-terminus of cTnI, only very short fragments are unique to cTnI. As a result of this, the development of cTnI antibodies with no cross-reaction with skeletal isoforms is a challenging task. Cross-reactivity should be taken into account when designing an immunoassay.

The high-sensitivity cTnI assay concept imposes special requirements in cardio-specificity of the antibodies. Indeed, even low (0.1% or less) cross-reaction with skeletal TnI isoforms in a high-sensitivity assay can result in false positives and misleading results if the concentration of skTnI in the blood of a patient is increased.

Complex of cTnI with TnC and cTnT

In cardiomyocytes, cTnI forms a ternary troponin complex with cTnT and TnC. Many scientific groups have shown that, in the blood of AMI patients, cTnI is still in complex with TnC and/or cTnT (29, 30, 31, 36, 37).

TnC and cTnT binding changes the conformation of cTnI and part of the cTnI surface is shielded by these proteins. Hence, the immunological properties of cTnI in free form and in complex are different. Antibodies that have been raised against the epitopes on the regions closed by TnC or cTnT binding might not be able to recognize cTnI in a protein complex in clinical samples. As most (if not all) cTnI molecules in blood are found in complex with TnC and/or cTnT, it is important that the cTnI-specific antibodies that are utilized in assays are capable of recognizing the protein in complexes.

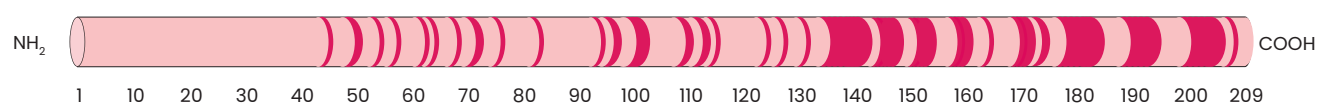


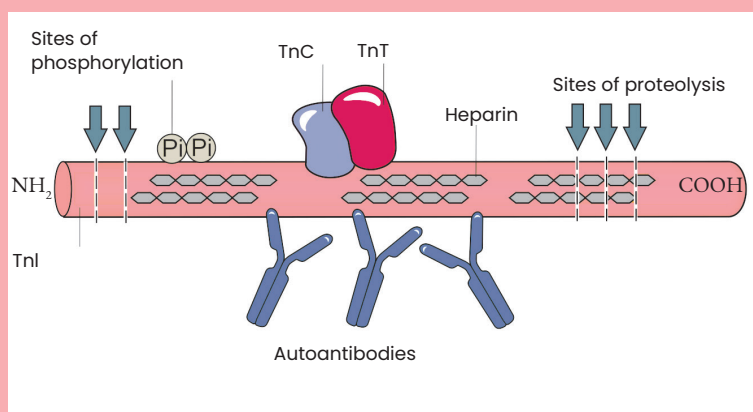
Figure 3.

Sequence similarity between cTnI and two skeletal muscle forms of TnI. Parts that are unique to cTnI are marked with lighter red. Parts that are similar in skeletal and cardiac forms of TnI are marked with darker red.

cTnI is a challenging analyte to be quantitatively measured

When detecting cardiac troponin I in the blood of patients, several factors can influence the quantitative measurement of this cardiac marker by altering the availability of epitopes for antibody binding. These factors include, for example, phosphorylation, proteolytic degradation, or the blocking of the epitopes by autoantibodies.

The influence of these factors on the interaction of antibodies with cTnI is multidimensional. For instance, it is well established that purified cTnI is highly susceptible to proteolytic degradation. In contrast, in the Tn complex, the central part of cTnI closely interacts with TnT and TnC. This interaction protects cTnI from proteolysis. Consequently, the epitopes that are located at the central part of the cTnI are significantly more stable than the epitopes which are located at the terminal parts of the molecule. However, while TnT and TnC interaction renders the central part more stable, they also compete with antibodies for the ability to bind with cTnI. Therefore, antibodies specific to only a few epitopes located in the central part of cTnI molecule are able to recognize cTnI in the blood of patients as the majority of cTnI is found in complex with TnC and/or TnT.



Schematic presentation of factors that can influence precise measurements of cTnI circulating in human blood.

Proteolytic degradation

cTnI is known to be an unstable molecule that undergoes proteolytic degradation. The most stable part of cTnI is located between amino acid residues 30 and 110 (17). While more than 80% of the protein comprises the a.a.r.s 23-196 (Katrukha 2018), it is that both in necrotic tissue and in blood, this region of the cTnI molecule is protected from the endogenous proteases through its interaction with TnC.

While N-terminal and C-terminal parts of the cTnI molecule that are not protected by TnC are partially truncated.

Phosphorylation

Serines 22 and 23 of cTnI can be phosphorylated by protein kinase A *in vivo*. This means that four forms of the cTnI protein (one dephosphorylated, two monophosphorylated and one bisphosphorylated) can coexist in the cell and appear circulating in blood after MI (18).

Phosphorylation of cTnI changes the conformation of the protein and modifies its interaction with other troponins. It also influences the interaction with some anti-cTnI antibodies, such as 22B11.

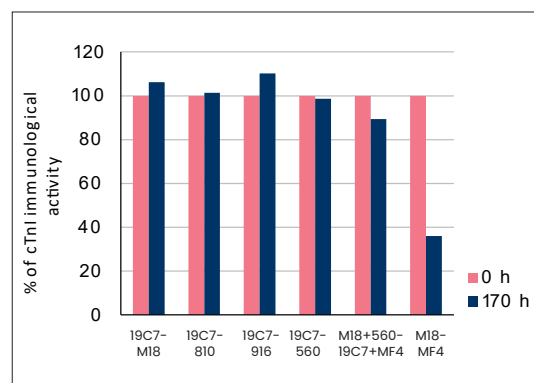


Figure 4. Effect of proteolytic degradation on the immunoreactivity of cTnI measured by different assays. The best combinations of anti-cTnI specific to the stable part of the cTnI molecule tested with native cTn complex before and after incubation for 170 hours with the mixture of endogenous proteases from human cardiac tissue. The M18-MF4 control assay is sensitive to the proteolytic degradation of cTnI.

MAb 22B11 only recognizes the dephosphorylated form of cTnI and does not react with mono- or bisphosphorylated forms of the cTnI antigen. 22B11 can be used for quantitative measurements of dephosphorylated cTnI in sandwich immunoassays or in Western blotting.

Effect of heparin

Heparin is widely used in clinical practice as an anticoagulant. Almost all patients with suspected AMI receive heparin in the first few minutes following admission. In addition, blood samples are often collected into heparin tubes. Heparin is a negatively charged molecule and it can readily interact with certain epitopes of cTnT and free cTnI molecules (Figure 5 and Katrukha 1999, Riabkova 2024). In the same time, the effect of heparin on the immunochemical detection of cTnI as a part of binary IC or ternary ITC complexes is much less pronounced, most likely due to the neutralization of highly positive charge of cTnI by TnC (Riabkova 2024).

Autoantibodies

Autoantibodies against cardiac troponin are found in the blood of both patients with heart disease and seemingly healthy individuals (20-22). Mostly the central part of the cTnI is affected by the autoantibody interference. (Vylegzhanina 2017). If the concentration of autoantibodies is high, it can result in a significant underestimation in the amount of cTnI measured in the blood samples of a patient (20, 34, 35).

Heterophile antibodies and the HAMA effect

Heterophile antibodies and the HAMA effect Heterophile antibodies arise when people are exposed to different animals or products derived from animals. These human antibodies can be specific to the immunoglobulins of mouse, rabbit, goat, sheep, cow, pig, rat and horse. In immunodiagnostics, the problem is most commonly associated with human anti-mouse antibody

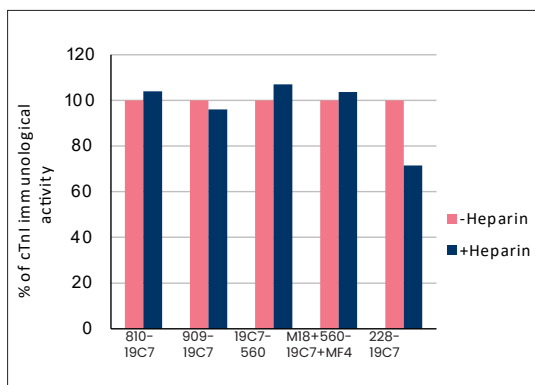


Figure 5. Sensitivity of anti-cTnI MABs to heparin. Different MAB combinations were tested either in the presence or absence of heparin (5 IU/ml). Native cTnI (50 ng/ml) was used as an antigen. A significant decrease in the immunoreactivity in the presence of heparin indicates that MAB 228 is sensitive to heparin.

(HAMA) due to the fact that most diagnostics assays use mouse derived antibodies.

In diagnostic tests, HAMA might cause false positive or false negative results (23-24). False positive results can delay correct diagnosis and may even lead to unnecessary hospital admissions, particularly when the test is used to diagnose life-threatening conditions such as AMI (25).

Troponin assays are particularly susceptible to HAMA due to low cut-off value requirements and because the levels of cTnI even in the plasma of AMI patients are very low. A study of subjects investigated with cTnI due to suspected AMI found that HAMA caused false positives in 5.5% of subjects with raised cTnI and 14% of subjects with raised cTnI and normal creatine kinase (26).

A powerful tool to solve the issue with HAMA in diagnostics tests is the use of chimeric or fully humanized antibodies, or the antibodies from various animal hosts (e.g. mouse and rabbit or mouse and goat MABs) in one assay. A few of our anti-cTnI antibodies have now been converted to chimeric proteins by changing the antibody constant regions from mouse to human derived sequences. When tested with HAMA containing serum samples, the results showed that the HAMA effect was eliminated by the use of chimeric cTnI antibodies (see Figure 6). All recombinant human anti-cTnI clones can be found under Cat.# RC4T19, RC4T21, and RC4TC2.

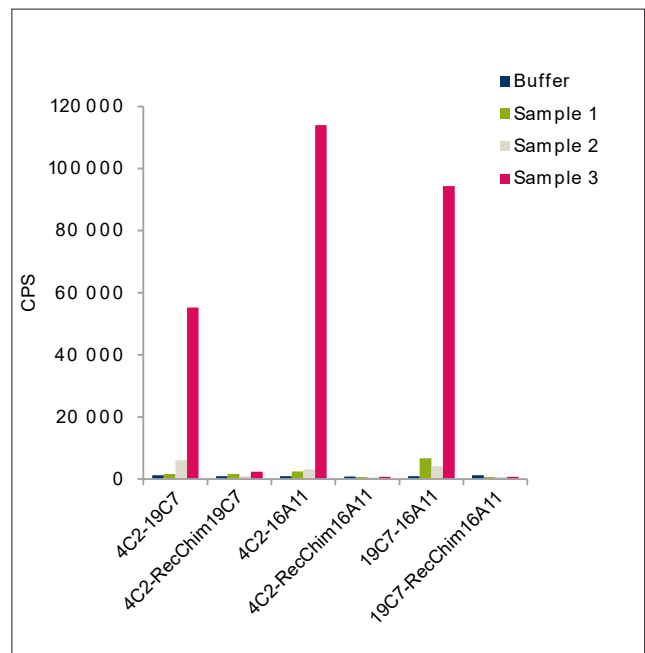


Figure 6. Chimeric antibodies mitigate the HAMA effect. The performance of chimeric and native 19C7 and 16A11 in the presence of HAMA was tested with three serum samples featuring varying HAMA concentrations: 807 ng/ mL in Sample 1, 1388 ng/mL in Sample 2 and 6220 ng/mL in Sample 3. Buffer without serum was used as a control. Antibody pairs that were compared are indicated in the figure.

cTnI assay development and pair recommendations

We can recommend several different antibody combinations for the development of cTnI immunoassays (see Table 4). All of the suggested capture-detection pairs have been selected following the thorough testing of hundreds of various antibody pair combinations by using our in-house sandwich method. All recommended pairs demonstrate good kinetics, low background, high analytical sensitivity and high reproducibility. In addition, all suggested antibody combinations have been tested with blood samples from AMI patients and demonstrated successful recognition of circulating cTnI. Our results have also been confirmed by assay manufacturers which are utilizing Hytest antibodies in their commercial high-sensitivity cTnI assays.

It is important to note that it is not possible to recommend only one “best pair” for the development of a cTnI immunoassay. The reason for this is that antibodies can perform differently depending on the assay platform. For example, MAbs that show excellent performance in ELISA could also be ideal in an assay that utilizes magnetic particles but then behave in a less than optimal way in a lateral flow format, or vice versa. A good, optimized assay is always the sum of all assay components and variables: antibodies, assay platform, buffers, label, incubation times, etc.

Table 4.
Antibody pair recommendations for quantitative cTnI sandwich immunoassays.

Assay type	Capture	Detection
1 + 1	19C7cc	RecChim16A11
	RecChim19C7	RecChim16A11
	4C2cc	RecChim19C7
	4C2cc	RecChim16A11
	625	RecChim19C7
	19C7cc	16A11cc
	19C7cc	560cc
	625	19C7cc
	560cc	458
	4C2cc	19C7cc

Assay type	Capture	Detection
2 + 1	19C7cc + MF4cc	7B9cc (specific to TnC)
2 + 2	RecR85 + 560cc	Y505 + RecChim20C6
	RecR33 + 560cc	Y505 + RecChim20C6
	RecR85 + 560cc	7B9cc + RecChim20C6
	916 + 560cc	19C7cc + MF4cc
	801 + 560cc	19C7cc + MF4cc
	909 + 560cc	19C7cc + MF4cc
	M18 + 560cc	19C7cc + MF4cc

Please note that these pairs are tested on different platforms. For more information, please refer to our Data Sheet or contact our sales support

cTnI combinations in lateral flow assays

Tests based on the lateral flow platform have been popular in diagnostics since their introduction in the late 1980s. Table 5 shows a list of antibody combinations that work well in lateral flow immunoassays. Please note that other combinations may work as well or even better.

Multi-MAb approach

In addition to the “traditional” 1+1 assay format, in which there is one capture and one detection MAb, we also recommend testing a multi-MAb approach. In this approach, there are two or even three capture MAbs, and one or more detection MAbs. In our experience, additional MAbs usually help to improve the assay analytical sensitivity. More importantly, this approach helps to reduce the negative effect of both the various posttranslational modifications of cTnI and the assay interfering factors (such as heparin) on the performance of the assay.

All of the two-site antibody combinations that we recommend demonstrate:

- High analytical sensitivity
- No cross-reaction with skeletal TnI isoforms
- Good interaction with free cTnI and cTnI as a part of IC or ITC complexes
- Low susceptibility to partial proteolysis of the cTnI molecule
- Either no or low susceptibility to the presence of heparin in the sample
- Either no or low susceptibility to cTnI phosphorylation
- Low susceptibility to the presence of autoantibodies in the sample.

Table 5.
Antibody pair combinations that perform well in the lateral flow format in different assay types.

Assay type	Capture	Detection
1 + 1	20C6cc (specific to cTn complex)	560cc
	560cc	20C6cc
	20C6cc	7B9cc (specific to TnC)
	19C7cc	560cc

Assay type	MAB1	MAB2	MAB3
1 + 2 or 2 + 1	4C2cc	7B9cc	20C6cc
	19C7cc	560cc	20C6cc
	560cc	7B9cc	20C6cc
	19C7cc	267	4T21/2
	19C7cc	560cc	4T21/2

Assay type	MAB1	MAB2	MAB3	MAB4
2 + 2	Y302	20C6cc	RecR85	7B9cc
	4C2cc	560cc	7B9cc	20C6cc

Assays that detect cTnI in complex forms

Both we and others have shown that the vast majority of cTnI in the blood of AMI patients is found as a binary complex with TnC (17, 27, 28, 29, 30, 31). Free cTnI is either present in minor quantities or can be totally undetectable (28, 30). For this reason, it would be possible to detect cTnI by using antibody pairs that are able to recognize the cTn complex instead of cTnI alone.

We provide two different concepts for this purpose.

cTnI assays that utilize anti-TnC antibodies combine one cTnI-specific MAb with one TnC-specific, enabling the detection of cTnI-TnC complex forms. (see Figure 7). Because TnC is not phosphorylated, is not cleaved by proteases, and is less susceptible to the presence of heparin or autoantibodies in the sample, this approach may help to improve analytical sensitivity, precision and the reproducibility of quantitative cTnI immunoassays. We provide two anti-TnC MAbs under Cat.# 4T27cc.

cTnI assays that utilize anti-cTn complex antibodies use one MAb that is specific to the cTn complex and one MAb that is specific to either cTnI or TnC (see Figure 8). We provide two MAbs that are specific to the cTn complex (Cat.# 4TC2). Based on customer feedback, the anti-cTn complex antibodies are often used in lateral flow immunoassays.

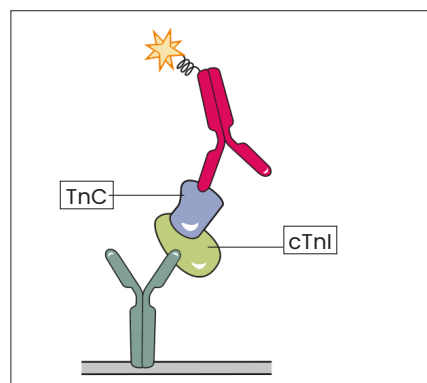


Figure 7.
Schematic presentation of a cTnI immunoassay utilizing an anti-TnC antibody. In this assay type the capture antibody (turquoise) is specific to cTnI and the detection antibody (pink) is specific to TnC.

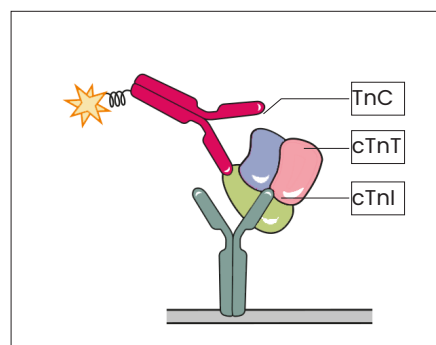


Figure 8.
Schematic presentation of a cTnI immunoassay utilizing an anti-cTn complex antibody. In this assay type the capture antibody (turquoise) is specific to cTn complex and the detection antibody (pink) is specific to cTnI.

Heterogeneity of cTnI forms in human blood and assay standardization

The heterogeneity of cTnI forms in human blood and the difference in the epitope specificity of the antibodies that are utilized in different assays means that results obtained by different assays can differ greatly. In the first generation of cTnI assays, the concentration of cTnI measured with one assay could be 10 to 1,000 times greater if analyzed with another cTnI assay. As a result of close collaboration between national and international organizations, scientists, clinical practitioners and industrial assay manufacturers, the between assay agreement is nowadays much better. However, cTnI standardization has not been completely achieved.

- Steps towards the standardization of the cTnI assays included:
- The introduction of the international cTnI standard (SRM 2921). This standard was developed by the National Institute of Standards and Technology (NIST) with material prepared by Hytest.
 - Gradual “standardization” of the epitopes detected in commercial assays. Figure 9 shows the epitope specificities of the commercial assays that are currently on the market. Most assays utilize antibodies that are specific to three regions of the cTnI molecule: 23–43, 41–56 and 83–93, with various platforms, buffers, labels, incubation times, etc.

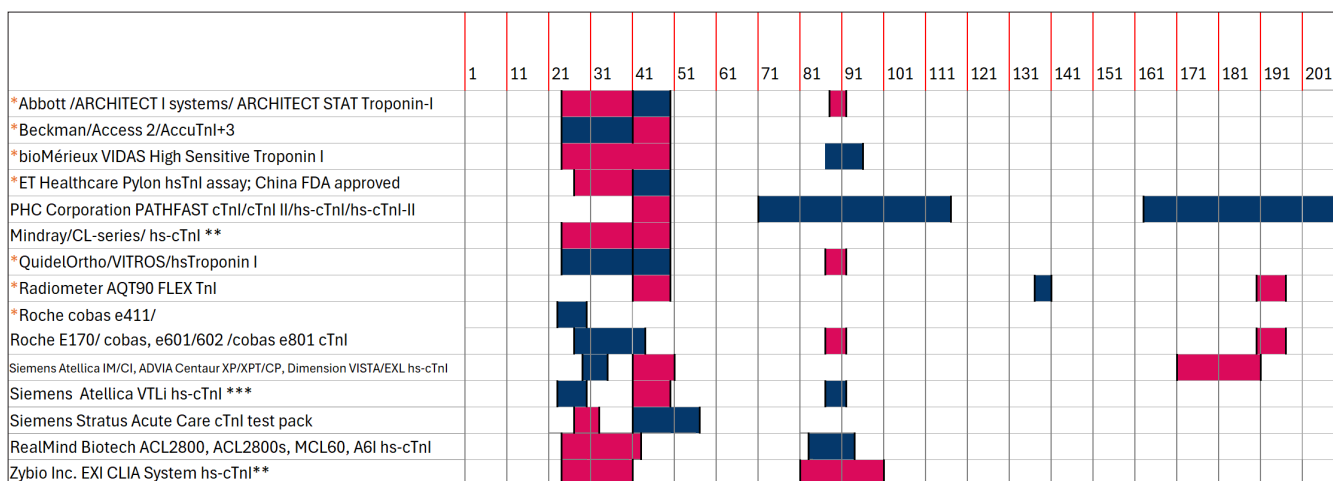


Figure 9. Epitopes of the antibodies utilized in commercial cTnI immunoassays. Note: Data are primarily based on the 2026 IFCC manufacturer-designated analytical characteristics table. Parameters marked with an asterisk (*) were not available in the 2026 version and were supplemented from the 2024 IFCC table. Pink bars represent epitopes that are recognized by capture antibodies; blue bars represent epitopes are recognized by the detection antibodies. **Detection antibody target in Zybio EXI CLIA and Mindray CL-Series hs-cTnI assays: cTn complex. ***Detection antibody epitopes in Siemens Atellica VTli hs-cTnI: 23-29, 87-91, TnC.

Antibodies for the detection of cTnI from different animal species

New drug testing and the evaluation of new surgery approaches are often carried out on experimental animals. The effects of new therapeutic or surgery technology on cardiac function and on cardiac myocyte viability are important and these can be studied by cTnI measurements in animal blood.

Several of our anti-cTnI MABs detect cTnI of various animal species in Western blotting (see Table 6). We have also tested the ability of selected antibody combinations to detect native purified animal cTnI in two-site combinations. Table 6 lists the combinations which, according to our studies, could be used for developing an immunoassay that detects cTnI in different animals. Calibration curves for one of these pairs, M155-19C7, are shown in Figure 10.

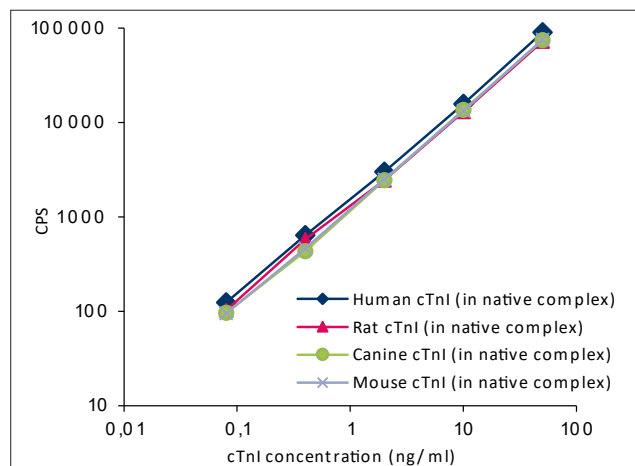


Figure 10. cTnI calibration curves for human, mouse, rat and dog (canine) Tn complexes. M155 was used as the capture and 19C7 was used as the detection antibody. This MAB combination gives equal response with antigens from different animal species.

Table 6. Cross-reactivity of anti-cTnI MABs with antigens from different animal species in Western blotting.

MAB	Human	Bovine	Porcine	Goat	Canine	Rabbit	Cat	Rat	Mouse	Fish
4C2	++	++	++	++	++	++	+	++	++	-
19C7	++	++	+	++	+	++	++	++	+	++
8E10	+	+	+	+	+	+	+	-	-	-
16A11	+	+	+	+	+	+	+	-	-	-
C5	++	++	++	++	++	++	++	++	++	++
MF4	+	+	+	+	+	-	+	+	+	-
22B11	++	-	+	-	-	-	-	-	-	-
247	++	++	++	++	++	+	++	++	++	N/A
10F4	++	++	++	++	++	++	++	++	+	N/A

Table 7. Two-site MAB combinations for the immunodetection of cTnIs from different animal species.

Coating MAB	MAB	Detecting MAB														
		19C7					M155					MF4				
		B	C	M	R	Rb	B	C	M	R	Rb	B	C	M	R	
Coating MAB	4C2		•	•	•	•										•
	801			•												
	M155	•	•	•	•	•										
	19C7											•	•	•	•	
	625	•	•	•	•	•										
	MF4			•			•	•	•	•	•					

B: Bovine, C: Canine, M: Mouse, R: Rat, Rb: Rabbit cTnI

Cardiac troponin I and troponin complex

Recombinant human cardiac troponin I

Our recombinant human cardiac troponin I (Cat.# 8RTI7) is produced by expressing the *TNNI3* gene in *E. coli*. The recombinant cTnI contains one additional Met residue at its N-terminus (due to *E. coli* expression) and it is not phosphorylated on residues Ser23 and Ser24. In SDS-PAGE, this protein migrates as a single band (see Figure 11). This highly purified protein can be used as a calibrator for immunoassays, as an immunogen for antisera production and as a mass cTnI standard.

Recombinant human cardiac troponin complexes (I-C and I-T-C)

In the cardiac troponin complex, the troponin subunits are non-covalently attached to each other. The strongest interaction has been demonstrated between cTnI and TnC. This interaction is Ca^{2+} dependent and this should be noted if using serum samples containing EDTA.

cTnI is extremely unstable in its free form and it demonstrates significantly better stability in complex with TnC (I-C) or in ternary cTnI-cTnT-TnC (I-T-C) complex. These two forms of the protein are preferable as a material for the preparation of protein standards and calibrators (17). Figure 12 shows the immunoreactivity of purified cTnI in I-T-C complex and in a free form when incubated at 4°C.

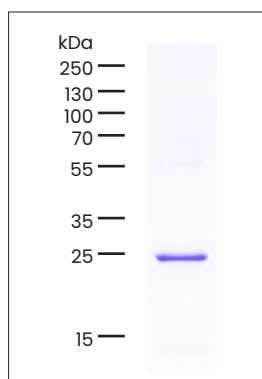


Figure 11. **Recombinant cardiac TnI.** 1 µg of human recombinant cardiac TnI (Cat.# 8RTI7) was run in 10-20% SDS-PAGE under reducing conditions.

Hytest offers three recombinant Troponin complexes: cardiac troponin ternary complex (cTn I-T-C complex, Cat.# 8ITCR), binary complex (cTn I-C complex, Cat.# 8ICR3) and a chimeric binary complex that consists of a most stable part of cTnI (fragment 28-110) that is connected with TnC by a 20-aa flexible linker of cTn I – C complex, Cat# 8IFC20). All of the proteins are expressed using *E. coli*, purified and show a final purity of more than 95% (Figure 13 on page 16).

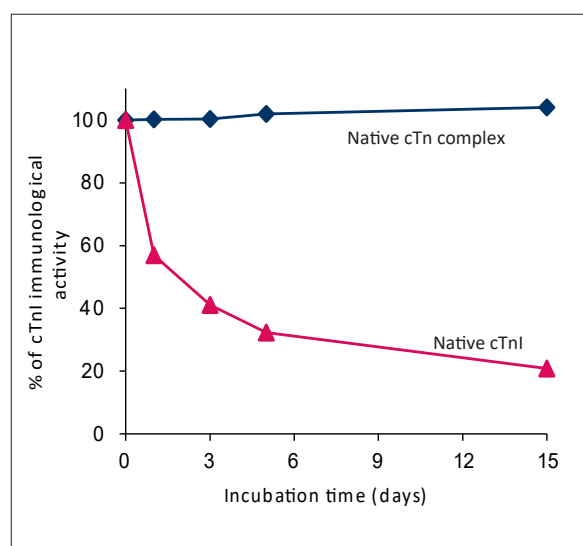


Figure 12. **Comparison of the stability of different forms of purified cTnI.** Native troponin complex or native cTnI was dissolved in normal human serum (the final concentration of cTnI was 30 ng/ml) and incubated for several time periods at 4°C. The immunoreactivity of the samples was measured at the indicated time points. When dissolved in serum, cTnI remains highly stable in troponin complex whereas the purified free cTnI quickly loses its immunoreactivity.

The immunoreactivity of all developed recombinant troponin complexes was comparable with the native analogue in two-step sandwich assays. The test panel include five antigens, native cTn ITC complex (ITCnat), binary cTn IC complex assembled from native proteins (ICart), recombinant ternary cTn ITC complex (8ITCR), recombinant binary cTn IC complex (8ICR3) and recombinant chimeric binary complex (8IFC20). Based on the test results (Figure 14), there is no significant difference when comparing the recombinant troponin complexes with the native protein.

Advantages of troponin complex over individual purified cTnI include:

- Antigen is in the same form as in AMI blood samples
- Unchanged tertiary structure
- Unchanged antibody binding sites
- High cTnI stability
- Ideal for the preparation of a cTnI calibrator and standards

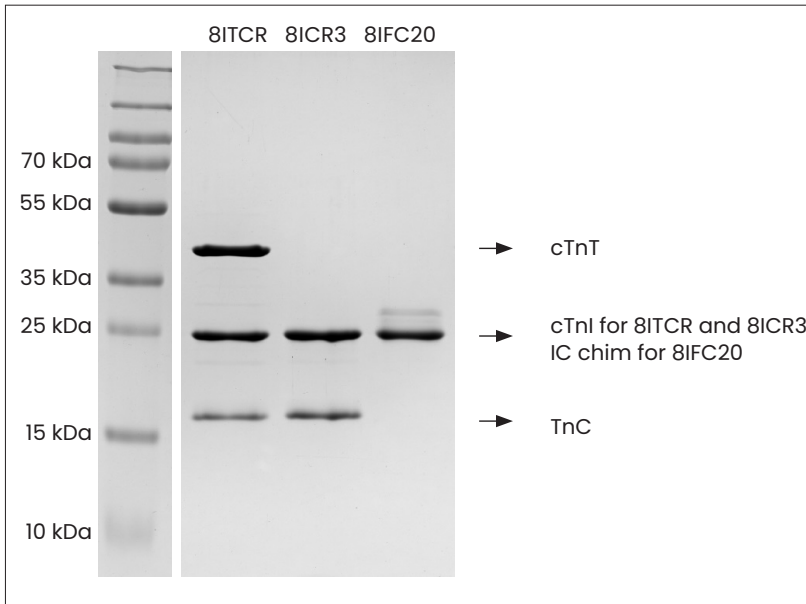


Figure 13.
SDS-PAGE of recombinant cTn ITC complex, cTn IC complex and recombinant chimeric cTnI (28-110 a.a.r.)-C complex under reducing conditions in a 10-20% gradient gel.

Lane 1: Molecule weight standards
 Lane 2: recombinant cTn ITC complex, Cat.# 8ITCR
 Lane 3: recombinant cTn IC complex, Cat.# 8ICR3
 Lane 4: recombinant chimeric cTn I (28-110 a.a.r.)-C complex Cat.# 8IFC20 8IFC20.

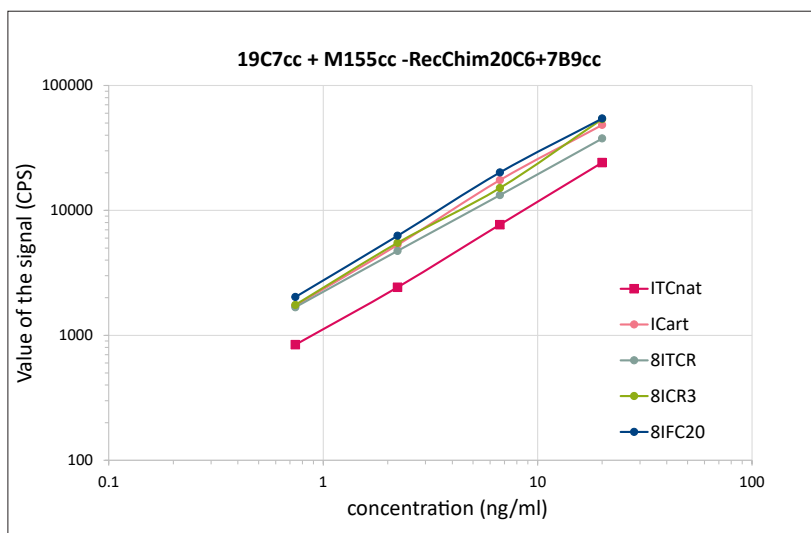


Figure 14.
Immunoreactivity test of all developed recombinant troponin complexes and native analogue in two-step sandwich assays

In 2004, Hytest's troponin I-T-C complex was selected by the American Association for Clinical Chemistry (AACC) Standardization Subcommittee for use by assay manufacturers as reference material in troponin I assays. The certified reference material SRM 2921 is available only from the National Institute of Standards and Technology (NIST). For more information, please visit www.nist.gov.

Cardiac troponin T (cTnT)

In human beings, cardiac troponin T is encoded by the TNNT2 gene. Ten different isoforms of cTnT have been identified, which result from alternative splicing of the mRNA transcript. Some of these isoforms are characteristic to the embryonic state of heart development, some are characteristic to normal adult heart tissue, while other forms have been associated with different cardiac pathologies. The major isoform found in normal adult human heart tissue (isoform 6 or TnT3) is 287 amino acids long with a calculated molecular weight of 34.6 kDa (32, 33).

Similarly to cTnI, the cardiac isoform of troponin T, cTnT, is widely used as a marker of myocardial cell injury. cTnT shows broadly comparable release kinetics and clinical sensitivity for detecting minor myocardial injury or necrosis. However, cTnT detection can be influenced by the molecular form of circulating cTnT, particularly proteolytic fragmentation, as well as by antibody epitope selection, assay sensitivity and calibration, and potential analytical interferences such as hemolysis, biotin, heterophile antibodies, autoantibodies, and macrotroponin. At Hytest, we provide MAbs that are suitable for the development of immunoassays for diagnostic purposes as well as several MAbs that are recommended for research use (see Figure 15).

Monoclonal antibodies for high-sensitivity cTnT assays

Our *in vitro* produced anti-cTnT MAbs (Cat.# 4T19cc) can be used for the development of an immunoassay with superior sensitivity (limit of detection better than 0.3 ng/l) and high specificity (no cross-reaction to cTnI or to skeletal isoforms of TnT up to 30 µg/l).

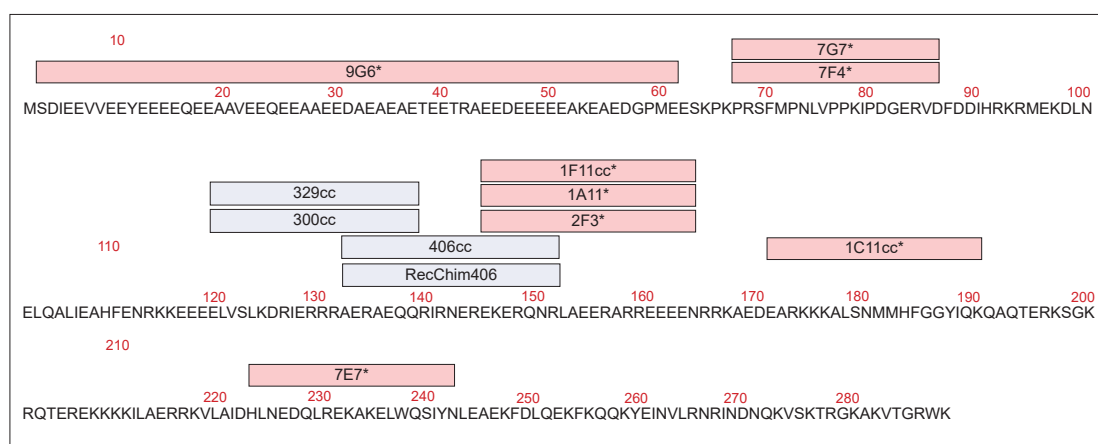


Figure 15.

Epitope mapping of Hytest anti-cTnT monoclonal antibodies. We offer antibodies for the development of high-sensitivity cTnT assays as well as for research purposes (marked with *).

The ability of the antibody pairs 329cc-406cc and 406cc-300cc to recognize cTnT in the blood has been studied with over 80 serum and plasma samples of AMI. The antibody pairs demonstrate a good correlation with a commercially available hs-cTnT assay. Results of the analysis of 38 serum samples are provided in Figure 16.

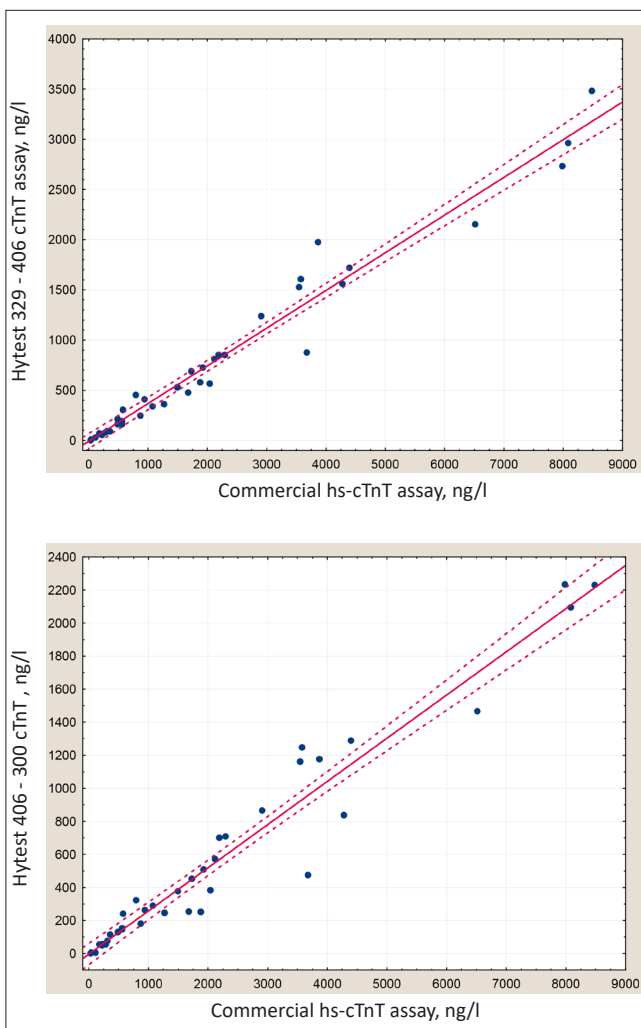


Figure 16. Hytest immunoassays show good correlation to a commercially available hs-cTnT assay. The concentration of cTnT in 38 serum samples obtained from AMI patients was determined by using two immunoassays that utilized Hytest antibodies (capture-detection pairs 329-406 and 406-300) and a commercially available hs-cTnT assay.

Recombinant human cTnT

Isoform 6 (which is also known in the literature as TnT3) is the major isoform of troponin T that is presented in normal adult human heart tissue.

Our recombinant human cTnT (Cat.# 8RTT5) is produced in *E. coli* by expressing a gene encoding the 288 amino acid long isoform 6 (TnT3) of cTnT. In SDS-PAGE, the purified recombinant cTnT migrates as a single band (see Figure 17) and has a purity >95%.

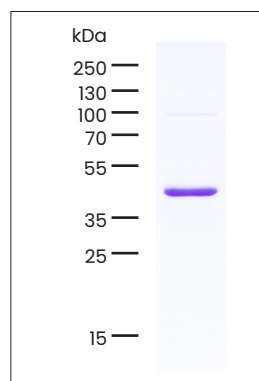


Figure 17. Recombinant cardiac TnT. 1 µg of human recombinant cardiac TnT (Cat.# 8RTT5) was run in 10–20% SDS-PAGE under reducing conditions.

Recombinant human slow and fast skTnT

The recombinant slow skeletal TnT (Cat.# 8RST2) and fast skeletal TnT (Cat.# 8RFT4) are ideal for studying immunoassay cross-reactivity to these isoforms.

Antibodies for research purposes

We offer several MAbs that are recommended for research purposes. They also cross-react with cTnT proteins from different animal species (see Table 8).

Table 8. Cross-reactivity of anti-cTnT MAbs with antigens from different animal species in Western blotting.

MAb	Human	Bovine	Porcine	Goat	Canine	Rabbit	Cat	Rat	Mouse	Fish
7F4	++	N/A	++	N/A	-	-	-	N/A	N/A	-
7G7	+	+	-	-	-	-	-	-	-	-
2F3	++	+	++	++	+	+	+	+	+	+
1A11	++	++	++	++	+	+	+	+	++	+
1F11	++	++	++	++	+	+	+	+	+	+

Troponin C (TnC)

Two isoforms of troponin C (TnC) are expressed in human muscles. One is found in slow skeletal muscles and myocardium, while the other is typical for fast skeletal muscles. The TnC that is present in cardiac muscle consists of 161 amino acid residues. It has a molecular weight of 18.4 kDa and a theoretical pI of 4.05.

TnC forms high affinity complex with cTnI and in the blood of AMI patients the majority of cTnI is found in complex with TnC. TnC protects cTnI from protease cleavage and can therefore be used as a natural stabilizer of cTnI in water solutions (17).

Our recombinant slow skeletal/cardiac TnC (Cat.# 8RSC4) is produced in *E. coli* and has apparent molecular weight in SDS-PAGE about 16.0 kDa. Hytest also offers recombinant human TnC skeletal muscle isoform 2 (Cat.# 8RKC3) also produced in *E. coli*. Both products can be used for immunoassay development.

Native human TnC from cardiac muscle

Hytest TnC (Cat.# 8T57) is purified from human cardiac muscle tissue by immunoaffinity chromatography followed by an additional ion-exchange chromatography step. In SDS-PAGE, the purified protein migrates as a single band (see Figure 18) and has a purity >95%.

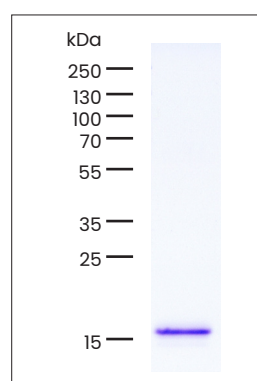


Figure 18.

Native TnC. 1 µg of human native TnC (Cat.# 8T57) was run in 10-20% SDS-PAGE under reducing conditions.

REFERENCES

1. **Gomes AV *et al.*** The role of Troponin in muscle contraction. *Life*. 2002, 54: 323-333.
2. **Bodor GS *et al.*** Cardiac troponin-I is not expressed in fetal and healthy or diseased adult human skeletal muscle tissue; *Clin Chem*. 1995, 41(12): 1710-1715.
3. **Jaffe AS *et al.*** Diseased skeletal muscle. A noncardiac source of increased circulating concentrations of cardiac troponin T; *J Am Coll Cardiol*. 2011, 58(17): 1819-1824.
4. **Cummins B *et al.*** Cardiac-specific troponin-I radioimmunoassay in the diagnosis of acute myocardial infarction. *Am Heart J*. 1987, 113(6): 1333-1344.
5. **Katus HA *et al.*** Enzyme linked immuno-assay of cardiac troponin T for the detection of acute myocardial infarction in patients. *J Mol Cell Cardiol*. 1989, 21(12): 1349-1353.
6. **Thygesen K *et al.*** Fourth Universal Definition of Myocardial Infarction (2018). *European Heart Journal*. 2019, 40(3):237-269.
7. **Sandoval Y and Thygesen K.** Myocardial Infarction Type 2 and Myocardial Injury. *Clin Chem*. 2017, 63(1):101-107.
8. **Cullen L *et al.*** Early rule-out and rule-in strategies for myocardial infarction. *Clin Chem*. 2017, 63(1): 129-139.
9. **Katrakha IA, Katrukha AG.** Myocardial Injury and the Release of Troponins I and T in the Blood of Patients, *Clinical Chemistry*, Volume 67, Issue 1, January 2021, Pages 124-130.
10. **Diercks DB *et al.*** Diagnostic accuracy of a point-of-care troponin I assay for acute myocardial infarction within 3 hours after presentation in early presenters to the emergency department with chest pain. *Am Heart J*. 2012, 163: 74-80.
11. **Reichlin, T *et al.*** One-Hour Rule-out and Rule-in of Acute Myocardial Infarction Using High-Sensitivity Cardiac Troponin T. *Arch Intern Med*. 2012, 172(16): 1211-1218.
12. **Apple FS *et al.***, on behalf of the IFCC Task Force4 on Clinical Applications of Cardiac Bio-Markers. IFCC educational materials on selected analytical and clinical applications of high-sensitivity cardiac troponin assays. *Clin Biochem*. 2015, 48:201-203.
13. **Sandoval Y *et al.*** Diagnosis of type 1 and type 2 myocardial infarction using a high-sensitivity cardiac troponin I assay with gender-specific 99th percentiles based on the Third Universal Definition of Myocardial Infarction classification system. *Clin Chem*. 2015, 61:657-663.
14. **Sandoval, Y *et al.*** Present and future of high sensitivity cardiac troponin in clinical practice: a paradigm shift to high sensitivity assays. *Amer J Med*. 2016, 129:354-365.
15. **Apple FS *et al.***, for the IFCC Task Force on Clinical Applications of Cardiac Bio-Markers. Cardiac troponin assays: guide to understanding analytical characteristics and their impact on clinical care, *Clin Chem*. 2017, 63(1):73-81.
16. **Prof. Fred S. Apple**, personal communication.
17. **Katrakha AG *et al.*** Degradation of cardiac troponin I: implication for reliable immunodetection. *Clin Chem*. 1998, 44(12): 2433-2440.
18. **Zhang J *et al.*** Top-down quantitative proteomics identified phosphorylation of cardiac troponin I as a candidate biomarker for chronic heart failure. *J Proteome Res*. 2011, 10(9): 4054-4065.
19. **Katrakha AG *et al.*** Biochemical factors influencing measurement of cardiac troponin I in serum. *Clin Chem Lab Med*. 1999, 37(11-12): 1091-1095.
20. **Eriksson S *et al.*** Negative interference in cardiac troponin I immunoassays from a frequently occurring serum and plasma component. *Clin Chem*. 2003, 49(7): 1095-1104.
21. **Eriksson S *et al.*** Autoantibodies against cardiac troponins. *N Engl J Med*. 2005, 352(1): 98-100.
22. **Eriksson S *et al.*** Negative interference in cardiac troponin I immunoassays by circulating troponin autoantibodies. *Clin Chem*. 2005, 51(5): 839-847.
23. **Rahman A and Broadley SA.** Review article: Elevated troponin: diagnostic gold or fool's gold? *Emerg Med Australas*. 2014, 26:125-130.
24. **Morton A.** When lab tests lie...heterophile antibodies. *Aust Fam Physician* 2014, 43, 391-393.
25. **Zaidi A and Cowell R.** False positive cardiac troponin elevation due to heterophile antibodies - more common than we recognise. *BMJ Case Reports*, 2010, Jul.
26. **Fleming SM *et al.*** False-positive cardiac troponin I in a routine clinical population. *Am J Cardiol*. 2002, 89, 1212-1225.
27. **Wu AHB.** Analytical issues for clinical use of cardiac troponin. *Cardiovascular biomarkers*. Editor: Morrow DA. Totowa (NJ): Humana Press; 2006. p 27-41. 15.
28. **Bates KJ *et al.*** Circulating immunoreactive cardiac troponin forms determined by gel filtration chromatography after acute myocardial infarction. *Clin Chem*. 2010, 56:952-958.
29. **Vylegzhanina A *et al.*** Full-Size and Partially Truncated Cardiac Troponin Complexes in the Blood of Patients with Acute Myocardial Infarction. *Clin Chem*. 2019, 65(7):882-892
30. **Wu AH *et al.*** Characterization of cardiac troponin subunit release into serum after acute myocardial infarction and comparison of assays for troponin T and I. American Association for Clinical Chemistry Subcommittee on cTnI Standardization. *Clin Chem*. 1998, 44(6):1198-1208.
31. **van Wijk XMR *et al.*** Cardiac troponin I is present in plasma of type 1 myocardial infarction patients and patients with troponin I elevations due to other etiologies as complex with little free I. *Clin Biochem*. 2019, 11(73): 35-43.
32. **Anderson PA *et al.*** Troponin T isoform expression in humans. A comparison among normal and failing adult heart, fetal heart, and adult and fetal skeletal muscle. *Circ Res*. 1991, 69(5):1226-1233.
33. **Anderson PA *et al.*** Molecular basis of human cardiac troponin T isoforms expressed in the developing, adult, and failing heart. *Circ Res*. 1995, 76(4):681-686.
34. **Eriksson S *et al.*** An interfering component in cardiac troponin I immunoassays-Its nature and inhibiting effect on the binding of antibodies against different epitopes. *Clin Biochem*. 2004, 37 (6):472-480.
35. **Vylegzhanina AV *et al.*** Anti-Cardiac Troponin Autoantibodies Are Specific to the Conformational Epitopes Formed by Cardiac Troponin I and Troponin T in the Ternary Troponin Complex. *Clin Chem*. 2017, 63(1), 343-350.
36. **Li L, Liu Y, Katrukha IA *et al.*** Design and Analytical Evaluation of Novel Cardiac Troponin Assays Targeting Multiple Forms of the Cardiac Troponin I-Cardiac Troponin T-Troponin C Complex and Fragmentation Forms. *Clin Chem*. 2025;71(3):387-395.
37. **Li L, Liu Y, Katrukha IA *et al.*** Characterization of Cardiac Troponin Fragment Composition Reveals Potential for Differentiating Etiologies of Myocardial Injury. *Clin Chem*. 2025 Mar 3;71(3):396-405.

Selected troponin articles from Hytest scientists

Riabkova NS, Kogan AE, Katrukha IA *et al.* **Influence of Anticoagulants on the Dissociation of Cardiac Troponin Complex in Blood Samples.** *Int J Mol Sci.* 2024;25(16):8919. Published 2024 Aug 16. doi:10.3390/ijms25168919

In this article, our scientists investigated the behavior of the native ITC complex when incubated in buffer solutions, serum, and citrate, heparin, and EDTA plasmas at various temperatures. The study examines the in vitro stability of the troponin complex under different conditions and suggests that dissociation of the troponin complex may occur both in damaged myocardium and in circulation. These insights can contribute to more accurate interpretation of cardiac troponin tests.

Riabkova NS, Bogomolova AP, Kogan AE *et al.* **Interaction of heparin with human cardiac troponin complex and its influence on the immunodetection of troponins in human blood samples.** *Clin Chem Lab Med.* 2024;62(11):2316-2325. Published 2024 May 14. doi:10.1515/cclm-2024-0066

In this article, our researcher demonstrated that heparin binds to both the human cardiac full-size ternary troponin complex (ITC-complex) and free cTnT, increasing their apparent molecular weights in gel filtration (GF) studies. However, heparin did not bind to the low molecular weight ITC-complex or the binary cTnI-troponin C complex.

Katrukha IA, Riabkova NS. (2023) **Fragmentation of human cardiac troponin T after acute myocardial infarction.** *Clin. Chem.* 2023 Mar 1;542:117281. doi: 10.1016/j.cca.2023.117281.

In this article our researchers bordered major cTnT fragments and quantified their relative abundance in the blood at different times after MI. cTnT was present in the blood of MI patients as 23 proteolytic fragments. The cTnT region approximately bordered by aa 69-158 is a promising target for antibodies used for measurement of total cTnT.

Katrukha IA, Katrukha, AG. **Myocardial Injury and the Release of Troponins I and T in the Blood of Patients.** *Clin. Chem.* 2021 Jan 8;67(1):124-130. doi: 10.1093/clinchem/hvaa281.

In this study a summary review of existing information regarding the causes and mechanisms that lead to the increase of cTn concentration in blood and the forms of cTn that are present in circulation after MI or other types of myocardial injury were analysed. Different etiologies of cardiac disease associated with increases of cTn above the 99th percentile and various mechanisms of troponin release from myocardium can result in the appearance of different forms of cTn in blood and provide the first clinical evidence of injury.

Vylegzhanina, AV, Kogan, AE, Katrukha, IA, Koshkina, EV, Bereznikova, AV, Filatov, VL, Bloschitsyna, MN, Bogomolova, AP and Katrukha, AG. **Full-Size and Partially Truncated Cardiac Troponin Complexes in the Blood of Patients with Acute Myocardial Infarction.** *Clin Chem.* 2019 Jul;65(7):882-892. doi: 10.1373/clinchem.2018.301127. Epub 2019 Mar 11.

In this article our researchers investigated in more detailed the presence of ternary troponin complex in blood of patients with AMI. The results suggests that the ternary troponin complex exists in 2 forms in the blood of patients with AMI: full-size ITC and LMW-ITC. In addition to the 2 forms of ternary troponin complexes, the binary troponin I-C and complex and free cardiac troponin T fragments are also present in the blood of the patients.

Selected troponin articles from Hytest scientists

Katrukha, IA, Kogan, AE, Vylegzhanina, AV, Kharitonov, AV, Tamm, NN, Filatov, VL, Bereznikova, AV, Koshkina, EV and Katrukha, AG. **Full-Size Cardiac Troponin I and Its Proteolytic Fragments in Blood of Patients with Acute Myocardial Infarction: Antibody Selection for Assay Development.** Clin. Chem. 2018, 64(7): 1104–1112.

In this study, analysis of serial samples from AMI patients revealed that the blood of AMI patients contained intact cTnI and eleven proteolytic cTnI fragments, the ratios of which did not significantly change within the first 36 hours after AMI. An important finding in this study was that antibodies specific to amino acid residues 23-196 of cTnI were able to recognize 80% of cTnI in clinical samples. However, because autoantibodies binding on this region can cause false negative results, the authors suggest that an immunoassay using antibodies specific to epitopes 23-40 and/or 140-196 would minimize the interfering effects of both truncation and autoantibodies while allowing as sensitive measurement of cTnI as possible.

Katrukha IA, Kogan AE, Vylegzhanina AV, Serebryakova MV, Koshkina EV, Bereznikova AV, Katrukha AG. **Thrombin-Mediated Degradation of Human Cardiac Troponin T.** Clin Chem. 2017, 63(6):1094-1100.

In this article, our researchers investigated in more detail the proteolytic degradation of cTnT. The results suggest that the 29 kDa fragment present in serum samples is formed during the sample preparation and that it is caused by the cleavage of cTnT by thrombin, a serine protease that is involved in the coagulation cascade.

Vylegzhanina AV, Kogan AE, Katrukha IA, Antipova OV, Kara AN, Bereznikova AV, Koshkina EV, Katrukha AG. **Anti-Cardiac Troponin Autoantibodies Are Specific to the Conformational Epitopes Formed by Cardiac Troponin I and Troponin T in the Ternary Troponin Complex.** Clin. Chem. 2017, 63(1), 343-350.

In this article, we investigated the epitope specificity of troponin autoantibodies that prevent an efficient detection of cTnI by such MAbs that bind to epitopes commonly utilized in commercial assays. The autoantibodies investigated were specific to the conformational epitopes found in the troponin I-T-C ternary complex but not in the binary I-C complex or free cTnI. On the other hand, the ternary I-T-C complex was one of the main cTnI forms only in the early samples of acute myocardial infarction patients. This means that if the blood of an AMI patient contains autoantibodies then the risk of obtaining falsely low troponin levels is higher in samples that are taken shortly after the onset of the AMI.

Vylegzhanina AV, Katrukha IA, Kogan AE and Bereznikova AV. **Epitope Specificity of Anti-Cardiac Troponin I Monoclonal Antibody 8I-7.** Clin. Chem. 2013, 59(12):1814-1816.

In this letter to the editor, we showed data relating to the epitope specificity of anti-cTnI MAb 8I-7. Our results also indicated that this MAb cross-reacts with skeletal troponin I.

Selected troponin articles from Hytest scientists

Katrukha AG. **Antibody selection strategies in cardiac troponin assays.** Cardiac Markers, 2003, 2nd edition, Edited by Alan HB. Wu. 173-185.

In this specific chapter of the book, the biochemical properties of troponin I (and T) are viewed and parameters affecting antibody selection for the assay development are discussed.

Katrukha A, Bereznikova A and Pettersson K. **New approach to standardization of human cardiac troponin I (cTnI).** Scand. J. Clin. Lab. Invest., Suppl. 1999, 230:124-127.

In this study, we compared the results from six different cTnI assays by measuring the cTnI concentration in a total of 21 clinical samples. All of the samples were analyzed in all of the assays using a set of different calibrators. The lowest between-manufacturer bias was obtained when using a heart tissue derived native troponin complex as the calibrator. Our conclusion is that in order to reduce assay-to-assay variation, the native troponin complex should be used as the calibrator.

Katrukha A, Bereznikova A, Filatov V and Esakova T. **Biochemical factors influencing measurement of cardiac troponin I in serum.** Clin. Chem. Lab. Med. 1999, 37(11-12):1091-1095.

Effect of complex formation, the unstable nature of cTnI, phosphorylation, as well as other factors that influence the recognition of cTnI in human serum are discussed. We concluded that all of these factors should be considered during the selection of the antibodies for the assay development.

Filatov VL, Katrukha AG, Bulargina TV and Gusev NB. **Troponin: structure, properties, and mechanism of functioning.** Biochemistry. 1999, 64(9):969-985.

REVIEW. The review summarizes what is known about the structure and function of troponin complex components. Data on phosphorylation of troponin I and troponin T are viewed.

Katrukha AG, Bereznikova AV, Filatov VL, Esakova TV, Kolosova OV, Pettersson K, Lövgren T, Bulargina TV, Trifonov IR, Gratsiansky NA, Pulkki K, Voipio-Pulkki LM and Gusev NB. **Degradation of cardiac troponin I: implication for reliable immunodetection.** Clin. Chem. 1998, 44(12):2433-2440.

In this study we showed that both N-terminal and C-terminal regions of cTnI were rapidly proteolytically degraded in necrotic tissue incubated at 37°C and in serum incubated at 23°C. The most stable part of cTnI was located between amino acid residues 30 and 110. We suggest that antibodies specific to the epitopes that are most resistant to proteolysis should be utilized when developing cTnI immunoassays.

Selected troponin articles from Hytest scientists

Filatov VL, Katrukha AG, Bereznikova AV, Esakova TV, Bulargina TV, Kolosova OV, Severin ES and Gusev NB. **Epitope mapping of anti-troponin I monoclonal antibodies.** Biochem. Mol. Biol. Int. 1998, 45(6):1179-1187.

We describe here the development of monoclonal antibodies using purified cTnI or troponin complex as immunogen. Epitope specificities of 31 antibodies are determined by using the SPOT technique. The generation of antibodies that recognize both isolated cTnI and cTnI in troponin complex allows for a reliable detection of cTnI in clinical samples.

Katrukha AG, Bereznikova AV, Esakova TV, Pettersson K, Lövgren T, Severina ME, Pulkki K, Vuopio-Pulkki LM and Gusev NB. **Troponin I is released in bloodstream of patients with acute myocardial infarction not in free form but as complex.** Clin. Chem. 1997, 43(8):1379-1385.

In this study we have shown for the first time that cTnI molecule is not released in the blood stream in a free form (as it was thought previously) but complexed with TnC. Different cTnI-specific antibodies vary in their ability to recognize cTnI in free and complexed forms. We have suggested using for the assay development antibodies that are not affected by cTnI – TnC complex formation and equally recognize both – free and complexed cTnI forms.

Katrukha AG, Bereznikova AV, Esakova TV, Filatov VL, Bulargina TV and Gusev NB. **A new method of human cardiac troponin I and troponin T purification.** Biochem. Mol. Biol. Int. 1995, 36:195-202.

Protocols for the purification of endogenous troponin I and T are described. The affinity purification method based on our monoclonal antibody C5 could be utilized for the purification of troponin I molecules from various animal species as well.

PATENTS

Hytest holds patents for 'Method and kit for the diagnosis of troponin I' (US7285418 and EP0938678).

Ordering information

Troponin I (TnI)

MONOCLONAL ANTIBODIES

Product name	Cat. #	MAb	Isotype	Remarks
Troponin I cardiac	4T21cc	M18cc	IgG1	<i>In vitro</i> , EIA, WB, a.a.r. 18-28
		1017cc	IgG1	<i>In vitro</i> , EIA, WB, a.a.r. 22-40
		1039cc	IgG1	<i>In vitro</i> , EIA, WB, a.a.r. 22-40
		4C2cc	IgG2a	<i>In vitro</i> , EIA, WB, a.a.r. 23-29
		M155cc	IgG1	<i>In vitro</i> , EIA, WB, a.a.r. 26-35
		19C7cc	IgG2b	<i>In vitro</i> , EIA, WB, a.a.r. 41-49
		560cc	IgG1	<i>In vitro</i> , EIA, WB, a.a.r. 83-93
		Y101	IgG1	<i>In vitro</i> , EIA, a.a.r. 83-100
		16A11cc	IgG1	<i>In vitro</i> , EIA, WB, a.a.r. 86-90
		16A12cc	IgG1	<i>In vitro</i> , EIA, WB, a.a.r. 86-90
		8E10cc	IgG1	<i>In vitro</i> , EIA, WB, a.a.r. 86-90
		MF4cc	IgG1	<i>In vitro</i> , EIA, WB, a.a.r. 190-196
		4T21	P4-14G5	IgG1
	916		IgG3	EIA, WB, a.a.r. 13-22
	909		IgG1	EIA, WB, a.a.r. 18-22
	801		IgG3	EIA, WB, a.a.r. 18-35
	810		IgG1	EIA, WB, a.a.r. 22-31
	3C7		IgG1	EIA, WB, a.a.r. 25-40
	228		IgG1	EIA, WB, a.a.r. 26-35
	820		IgG1	EIA, WB, a.a.r. 26-35
	10F4		IgG2a	EIA, WB, a.a.r. 34-37
	247		IgG1	a.a.r. 65-74, only free cTnI
	17F3		IgG1	EIA, WB, a.a.r. 87-90
	84		IgG1	EIA, WB, a.a.r. 117-126
	M46		IgG1	EIA, WB, a.a.r. 130-145, <10 % C/r with skeletal troponin I
	625		IgG1	EIA, WB, a.a.r. 169-178
	458		IgM	EIA, WB, a.a.r. 169-178
	596		IgG1	EIA, WB, a.a.r. 169-178, <10 % C/r with skeletal troponin I
	267	IgG2a	EIA, WB, a.a.r. 169-178, <10 % C/r with skeletal troponin I	
C5	IgG2b	EIA, WB, a.a.r. 186-192, >50 % C/r with skeletal troponin I		
p45-10	IgG1	EIA, WB, a.a.r. 195-209		
Troponin I cardiac, phosphorylated form	4T45	1G11	IgG2b	EIA, WB, a.a.r. N/A
Troponin I cardiac, dephosphorylated form	4T46	22B11	IgG2b	EIA, WB, a.a.r. 20-24
Troponin complex, cardiac	4TC2	20C6cc	IgG2b	<i>In vitro</i> , EIA
		Tcom8	IgG1	EIA
	RC4TC2	RecChim20C6	IgG1	EIA, recombinant chimeric antibody
Troponin I skeletal muscle	4T20	12F10	IgG2b	EIA, WB
		7G2	IgG2b	EIA, WB

Troponin I (TnI)

MONOCLONAL ANTIBODIES

Product name	Cat. #	MAb	Isotype	Remarks
Troponin I cardiac	RC4T21	RecChim19C7	IgG1	EIA, recombinant chimeric antibody
		RecChim16A11	IgG1	EIA, recombinant chimeric antibody
		RC560	IgG1	EIA, recombinant chimeric antibody
		Y306	IgG	EIA, a.a.r. 22-40, recombinant rabbit antibody
		Y503	IgG1	EIA, a.a.r. 22-40, recombinant chimeric antibody
		RecR1	IgG	EIA, a.a.r. 24-40, recombinant rabbit antibody
		RecR23	IgG	EIA, a.a.r. 24-40, recombinant rabbit antibody
		RecR33	IgG	EIA, a.a.r. 24-40, recombinant rabbit antibody
		RecR85	IgG	EIA, a.a.r. 24-40, recombinant rabbit antibody
		Y303	IgG	EIA, a.a.r. 28-34, recombinant rabbit antibody
		Y309	IgG	EIA, a.a.r. 39-54, recombinant rabbit antibody
		Y302	IgG	EIA, a.a.r. 83-100, recombinant rabbit antibody
		Y501	IgG1	EIA, a.a.r. 161-178, recombinant chimeric antibody
		Y504	IgG1	EIA, a.a.r. 161-178, recombinant chimeric antibody
		Y502	IgG1	EIA, a.a.r. 174-191, recombinant chimeric antibody
		Y505	IgG1	EIA, a.a.r. 174-191, recombinant chimeric antibody
		Y601	IgG1	EIA, a.a.r. 182-192, recombinant chimeric antibody
Y603	IgG1	EIA, a.a.r. 182-192, recombinant chimeric antibody		

POLYCLONAL ANTIBODY

Product name	Cat. #	Host Animal	Remarks
Troponin I cardiac	4T21/2	goat	EIA

Available only in certain regions.

ANTIGENS

Product name	Cat. #	Purity	Source
Troponin I cardiac, human	8T53	>98%	Human cardiac muscle
Troponin I cardiac, human, recombinant	8RT17	>95%	Recombinant
Troponin I skeletal muscle, human	8T25	>95%	Human skeletal muscle
Troponin IC complex, cardiac, human, recombinant	8ICR3	>95%	Recombinant
Troponin I (fragment 28-110) – troponin C complex, cardiac, human, recombinant chimeric	8IFC20	>95%	Recombinant
Troponin ITC complex, cardiac, human, recombinant	8ITCR	>95%	Recombinant

DEPLETED SERUM

Product name	Cat. #	Source
Troponin I free serum	8TFS	Pooled normal human serum Currently provided with Cat.# 8TFS2

Troponin T (TnT)

MONOCLONAL ANTIBODIES

Product name	Cat. #	MAB	Subclass	Remarks
Troponin T cardiac	4T19cc	300cc	IgG1	<i>In vitro</i> , EIA, a.a.r. 119-138
		329cc	IgG1	<i>In vitro</i> , EIA, a.a.r. 119-138
		406cc	IgG2b	<i>In vitro</i> , EIA, a.a.r. 132-151
		1F11cc	IgG2b	<i>In vitro</i> , EIA, WB, a.a.r. 145-164
		1C11cc	IgG1	<i>In vitro</i> , EIA, WB, a.a.r. 171-190
	4T19	9G6	IgG1	EIA, WB, a.a.r. 2-61
		7F4	IgG2b	EIA, WB, a.a.r. 67-86
		7G7	IgG1	EIA, WB, a.a.r. 67-86
		2F3	IgG2b	EIA, WB, a.a.r. 145-164
		1A11	IgG2b	EIA, WB, a.a.r. 145-164
		7E7	IgG1	EIA, WB, a.a.r. 223-242
	RC4T19	RecChim406	IgG1	EIA, recombinant chimeric antibody

HUMAN ANTIGENS

Product name	Cat. #	Purity	Source
Troponin T cardiac, human, recombinant	8RTT5	>95%	Recombinant
Troponin T skeletal muscle, human	8T24	>95%	Human skeletal muscle
Troponin T fast skeletal, human, recombinant	8RFT4	>95%	Recombinant
Troponin T slow skeletal, human, recombinant	8RST2	>95%	Recombinant
Troponin ITC complex, human, recombinant	8ITCR	>95%	Recombinant

Troponin C (TnC)

MONOCLONAL ANTIBODIES

Product name	Cat. #	MAB	Subclass	Remarks
Troponin C	4T27cc	RC7B9	IgG1	EIA, recombinant chimeric antibody
		7B9cc	IgG1	<i>In vitro</i> , EIA, WB
Troponin complex, cardiac	4TC2	20C6cc	IgG2b	<i>In vitro</i> , EIA
		Tcom8	IgG1	EIA
	RC4TC2	RecChim20C6	IgG1	EIA, recombinant chimeric antibody

HUMAN ANTIGEN

Product name	Cat. #	Purity	Source
Troponin C, human	8T57	>98%	Human cardiac muscle
Troponin C slow skeletal/cardiac, human, recombinant	8RSC4	>95%	Recombinant
Troponin C skeletal isoform 2, human, recombinant	8RKC3	>90%	Recombinant
Troponin IC complex, human, recombinant	8ICR3	>95%	Recombinant
Troponin I (fragment 28-110) – troponin C complex, cardiac, human, recombinant chimeric	8IFC20	>95%	Recombinant
Troponin ITC complex, human, recombinant	8ITCR	>95%	Recombinant



**Scientific
excellence
for IVD**

HYTEST LTD

Intelligate 1, 6th floor, Joukahaisenkatu 6
FI-20520 Turku, FINLAND
Tel. +358-2-512-0900 • E-mail: hytest@hytest.fi
HYTEST.FI

HYTEST NORTH AMERICA INC.

800 MacArthur Blvd, STE 100,
Mahwah, New Jersey 07430
Tel. 833-368-3489 • E-mail: hytestna@hytest.fi
HYTESTNA.COM

OUR BROCHURES

Product Catalog 2026 • Cardiac Markers •
Neuroscience • Inflammation •
Infectious Diseases • Metabolic
Syndrome • Thyroid Diseases • Veterinary